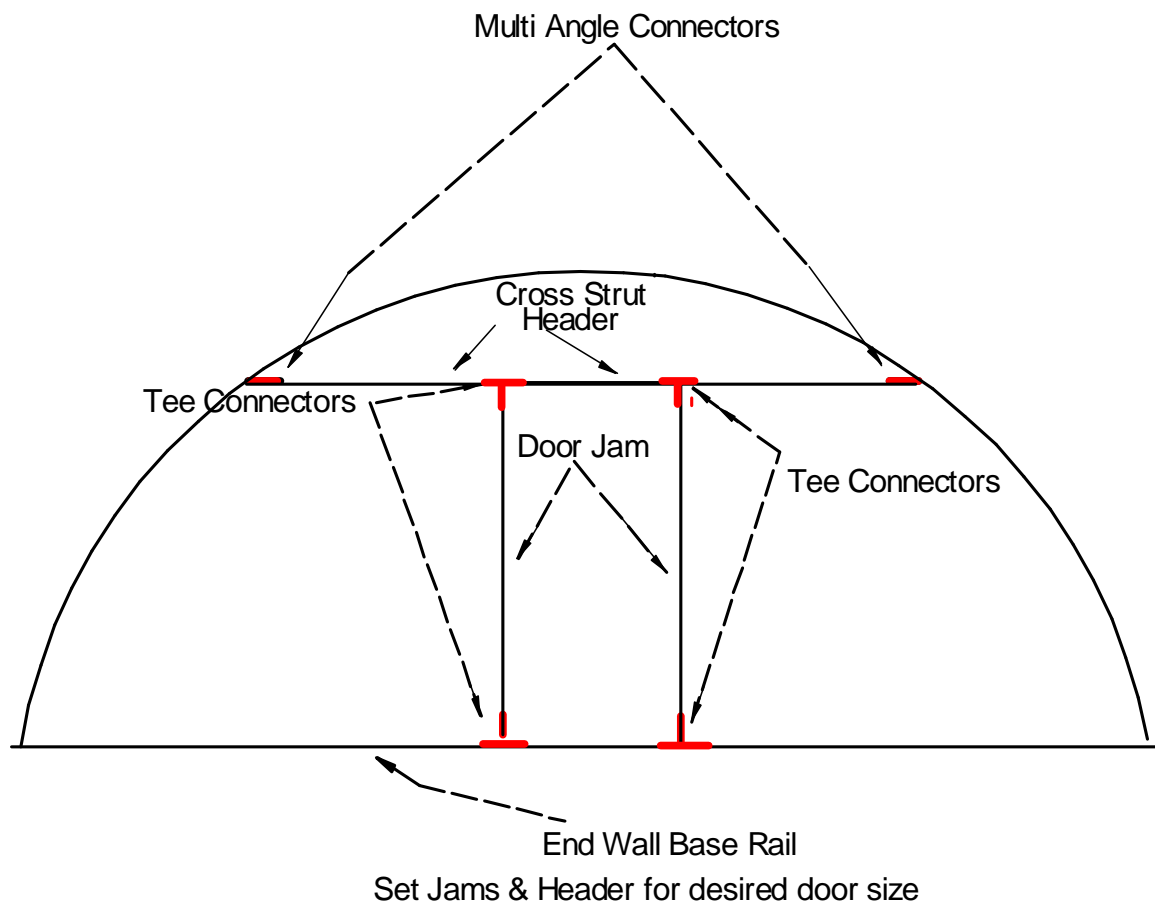


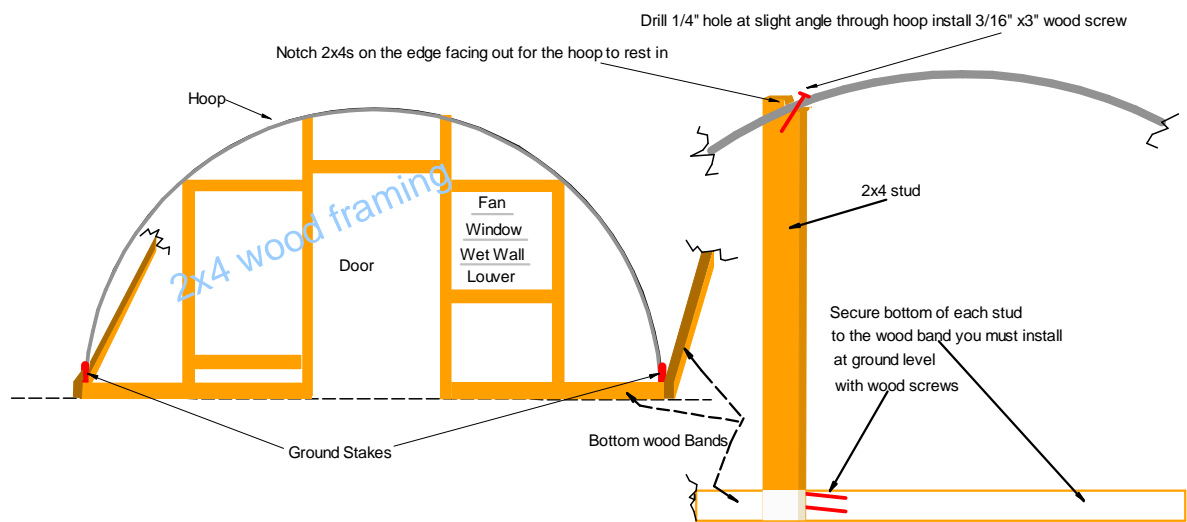
This can also be used for lighter weight 1" emt hoop movable & anchored hoop houses , just purchase same welded connectors for the 1" emt size instead of 1 3/8". Please NOTE that split tees are not available for 1" emt, only the welded connectors are available for 1" movable or anchored.

Typical door frame out on any style gothic, gable or round hoop house 16 ft to 24 ft. wide & taller than 9 feet tall at center. Using round steel tubing. Use 1 3/8" welded tee connectors for movable portable structures for strength. they are more difficult as tubing has to be slide through them but very strong when moving..Use the less costly split 1 3/8" tee clamps for same setup if building in ground anchored houses. Commercial aluminum or wood screen doors can be installed onto this tubing framing. If desired, tubing door framing can be lined with 1x2 wood stripe , tech screwed to outside or inside surface to provide a flat surface for attaching doors to.



This can also be used for lighter weight 1" emt hoop movable & anchored hoop houses , just purchase same welded connectors for the 1" emt size instead of 1 3/8". Please NOTE that split tees are not available for 1" emt, only the welded connectors are available for 1" movable or anchored.

Typical door frame out on any style gothic, gable or round hoop house 6 ft. to 16 ft wide & taller than 6 to 9 feet tall at center. Using round steel tubing. Use 1 3/8" welded tee connectors for movable portable structures for strength. They are more difficult on installing as tubing has to be slide through them but very strong when moving. Use the less costly split 1 3/8" tee clamps for same setup if building in ground anchored houses. Commercial aluminum or wood screen doors can be installed onto this tubing framing. If desired, tubing door framing can be lined with 1x2 wood stripe , tech screwed to outside or inside surface to provide a flat surface for attaching doors to.



Typical wood stud end wall framing, Number of studs required are variable subject to house size and uses.